

WITH YOU EVERYDAY

LUGAS6.COM

UBI S & UBI S JET / UBI / UBI PIC
UBI JET & UBI JET DISK / UBI FLOW / UBI SWITCH
> **BALE UNROLLERS / BALE UNROLLERS STRAW SPREADERS**



UBI RANGE



LUCAS 
FEEDING SOLUTIONS



UNROLLING SYSTEMS MADE FOR YOU

Lucas C, expert in livestock management, designs machines in accordance with the real needs of farmers. The machines must be adapted to the size of the farms and the tools present on the farms. The UBI range of bale unrollers and straw spreaders has been designed with this in mind.

These machines can be adapted to any type of use, thus ensuring clean and efficient unrolling of all round bales as well as sustained and effective straw spreading. They can also be attached to the loaders present on the farm. Whether it is on the 3 points of the tractor or at the front of the loader, on a telehandler or on a small articulated loader, there is inevitably a machine which can be hitched to one of the carriers present on the farm. The UBI range of bale unrollers can be used to distribute dry fodder to suckling cows, goats and sheep as well as to straw spread stalls, barns and horse boxes.

According to the type of breeding and the needs associated with the exploitation, Lucas C proposes a wide choice of bale unrollers, straw spreaders, divided into 6 ranges of products.

UBI S and **UBI S JET** : Bale unroller & Straw spreader for small loaders

UBI : Bale unroller with tilting body

UBI PIC : Bale unroller & Bale spike

UBI JET : Bale unroller straw spreader- with tines or discs

UBI FLOW : Bale unroller straw blower with turbine

UBI SWITCH : Versatile remote controlled bale unroller

A COMPLETE AND COMPLEMENTARY RANGE

The UBI range of bale unrollers and straw spreaders is composed of 6 complementary machine ranges that meet a specific need or application. These machines all have one thing in common, an efficient unrolling of round bales of hay, alfalfa and wraps.



UBI S & UBI S JET
Bale unroller & Light straw spreader



UBI MANUAL / UBI / UBI SWIVELLING
Swivelling bale unroller with tilting body



UBI PIC / UBI PIC FIX
Bale unroller & Bale spike



UBI JET & UBI JET DISK
Bale unroller straw spreader- with tines or discs



UBI FLOW
Bale unroller straw blower with turbine



UBI SWITCH
Versatile remote controlled bale unroller

LEGEND

● Standard
● Optional



Direct tractor Control



Function Selector Control



Manual Control



Electric Control

UBI S

LIGHT BALE UNROLLER FOR SMALL LOADERS



- **Simple and light bale unroller**

Designed for small tractors and articulated loaders, its unladen weight is less than 400 kg.

- **Chain and bars conveyor**

The tension of the chains adjusts itself thanks to the weight of the bale, the bottom goes up as you go along to unroll the bales of straw, hay and wrapped silage until the end.

- **Fixed tooth**

The chain conveyor is equipped with fixed tooth that allow the conveyor to operate in forward and reverse to manage the position of the bale.

- **Customizable Hitch**

As standard, the machine can be hitched centrally or offset 30 cm to fit buildings and required distribution.

OPTIONAL EQUIPMENT



Hydraulically adjustable loading arm

The unroller can be equipped with a loading arm that allows the bale to be loaded independently into the machine.



Bale extension Ø 170 cm

The unroller can be equipped with an extension located at the end of the box to allow the distribution of bales of 170 cm in diameter.

COMPATIBILITY



CONTROL



Specs	UBI S
Max. bale diameter (cm)	Ø 150
Loading arm	Option
Distribution	Right rear or Left front
Overall height (mm)	1000 without arm / 1900 with arm
Overall length (mm)	2000
Overall width (mm)	1710
Hydraulic function	1 DE
Required oil flow	40 – 50
Tractor power (HP)	60
Unladen weight (Kg)	390

UBI S JET

LIGHT BALE UNROLLER FOR SMALL LOADERS



• Simple and light bale unroller

Designed for small tractors and articulated loaders, its unladen weight is less than 500 kg.

• Chain and bars conveyor

The tension of the chains adjusts itself thanks to the weight of the bale, the bottom goes up as you go along to unroll the bales of straw, hay and wrapped silage until the end.

• Fixed tooth

The chain conveyor is equipped with fixed tooth that allow the conveyor to operate in forward and reverse to manage the position of the bale.

• Control of the conveyor

As an option, the conveyor can be controlled by an electric variator to stabilize its speed according to the application.

OPTIONAL EQUIPMENT



Body with bottom metal sheet

Metal piece located under the unroller that keeps the feed alley clean during the distribution phases.



Hydraulic straw spreading system with tines

Throws the straw up to 5 m without breaking it or making excessive dust. It can be folded manually to keep the distribution on the right side at the 3 points or left side on loader.

COMPATIBILITY



CONTROL



Specs	UBI S JET
Max. bale diameter (cm)	Ø 170
Loading arm	Option
Distribution	Right rear or Left front
Overall height (mm)	1400 without arm / 1900 with arm
Overall length (mm)	2000
Overall width (mm)	1710 without straw spreader / 2150 with straw spreader
Hydraulic function	1 DE
Required oil flow	40 – 50
Tractor power (HP)	60
Unladen weight (Kg)	490

UBI MANUAL/UBI/ UBI SWIVELLING

BALE UNROLLERS



The UBI Manual, UBI and UBI Swivelling bale unrollers are equipped as standard with a tilting body to allow efficient unrolling of hay, straw, wrapped bales and alfalfa. These machines can be attached to the tractor's 3-point linkage or to the front of a telehandler. On the UBI and UBI Swivelling machines, the loading arm is hydraulically adjustable to adapt to different bale sizes. The UBI Manual and UBI are distributing on the right side and the UBI Swivelling is fitted with a 180° rotation.



Tilting body

Hydraulically tilting body dedicated to the loading of the bales, this system also allows to put the bale at the end of the conveyor for an efficient unrolling of the core of the bale.



180° rotation by toothed wheel

The 180° rotation allows distribution to the left, right or center of the feed alley to accommodate different building configurations.

OPTIONAL EQUIPMENT



Retractable tooth

Patented tine system: ensures efficient unrolling that prevents product from falling back under the machine. It ensures even and homogeneous distribution along the feed alley.



Body with bottom metal sheet

Metal piece located under the unroller that keeps the feed alley clean during the distribution phases.



Electric control

Allows all machine functions to be controlled from the tractor cab for ease of operation. This control does not allow simultaneous use of the machine's functions.

COMPATIBILITY



CONTROL



Specs	UBI MANUAL	UBI	UBI SWIVELLING
Max. bale diameter (cm)	Ø 180	Ø 180	Ø 180
Loading arm	Option	Standard	Standard
Distribution	Straight	Straight	180°
Distribution offset from the center of the frame (mm)	1300	1295	1280
Overall height (mm)	1260	2300	2300
Overall length (mm)	2100	2100	2100
Overall width (mm)	1610	1610	1610
Hydraulic function	-	1 SE	1 SE
Tractor power (HP)	100	100	100
Unladen weight (Kg)	660	710	880

UBI PIC / UBI PIC FIX

BALE UNROLLERS & BALE SPIKE



The UBI PIC and UBI PIC FIX unrollers are 2-in-1 machines that only require the use of a front loader or a telehandler to efficiently unroll a bale of hay, straw, wraps or alfalfa. The difference between these two machines is that the UBI PIC version has a tilting body. These machines can be attached to the tractor loader, an articulated loader or a telehandler. As standard, the machine distributes to the left front.



Bale Spike

Accessory for handling round and square bales, it is equipped with 2 tines of 115 cm \varnothing 40 mm and a distance of 90 cm between the two tines. The frame automatically activates and locks the unroller.



Connection system

The drive of the unroller conveyor is powered by a motor with a system of conical teeth located on the bale spike that ensures drive in all hitch configurations without the need to get out of the cab.

OPTIONAL EQUIPMENT



Retractable tooth

Patented tine system: ensures efficient unrolling that prevents product from falling back under the machine. It ensures even and homogeneous distribution along the feed alley.



Distribution on the left, on the right or on both sides

Depending on the configuration of the barns, the hitching and driving system of the conveyor can be on one side or the other side or both sides to ensure the distribution of the bale.



Body with bottom metal sheet

Metal piece located under the unroller that keeps the feed alley clean during the distribution phases.

COMPATIBILITY



CONTROL



Specs	UBI PIC	UBI PIC FIX
Bale diameter max (cm)	Ø 180	Ø 180
Distribution	Front left	Front left
Distribution offset from the center of the frame (mm)	1540	1465
Tilting body	Yes	No
Overall height (mm)	1260	1260
Overall length (mm)	2280	2280
Overall width (mm)	1900	1900
Hydraulic function	2 DE	1 DE
Tractor power (HP)	100	100
Loader lifting power (Kg)	1500	1500
Unladen weight (Kg)	750	750

UBI JET/UBI JET DISK

BALE UNROLLERS STRAW SPREADERS



The UBI Jet and UBI Jet Disk bale unrollers and straw spreaders are versatile machines with a 180° rotation for distribution and straw spreading. These machines are equipped as standard with a tilting body for efficient unrolling of hay, straw, wrapped bales and alfalfa and a hydraulically adjustable loading arm to adapt to different bale sizes. These machines can be attached to the rear of the tractor or to the boom of a telehandler.



Straw spreading with tines

Provides 180° spreading over 5 m with a working width of 120 cm. The straw spreader with tines is hydraulically retractable under the machine to keep the distribution capacity to the left, right or center of the feed alley.



Straw spreading discs

Provides straw spreading over a working width of 6 m. Optional extended mulching discs provide an 8 m working width. The speed of the discs can be adjusted manually. Distribution on this machine can be done on the left or right side thanks to the 180° rotation.

OPTIONAL EQUIPMENT



Retractable tooth

Patented tine system: ensures efficient unrolling that prevents product from falling back under the machine. It ensures even and homogeneous distribution along the feed alley.



Body with bottom metal sheet

Metal piece located under the unroller that keeps the feed alley clean during the distribution phases.



Electric control

Allows the control of all the functions of the machine from the tractor cab for a comfortable use. This control allows simultaneous use of the machine's functions and has a display screen with storage of 3 conveyor speeds depending on the type of bales and applications.

COMPATIBILITY



CONTROL



Specs	UBI JET	UBI JET DISK
Bale diameter max (cm)	Ø 180	Ø 180
Distribution	180°	Right and left
Distribution offset from the center of the frame (mm)	1280	1280
Overall height (mm)	2300	2300
Overall length (mm)	1610	1610
Overall width (mm)	2760 / 2100	2100
Hydraulic function	1 SE	1 SE
Tractor power (HP)	100	100
Loader lifting power (Kg)	3000	3000
Unladen weight (Kg)	990	950

UBIFLOW

BALE UNROLLER STRAW BLOWER WITH TURBINE



The UBI Flow bale unrollers straw blowers are high-performance machines equipped with a turbine for blowing up to 17 m and a 180° rotation for left or right distribution. These machines are equipped as standard with a tilting body for efficient unrolling of hay, straw, wrapped bales and alfalfa and a hydraulically adjustable loading arm to adapt to different bale sizes. The UBI Flow range is available in two versions: one mounted on the 3 points of a tractor and the other trailed where a tractor of 40 HP can be enough to operate it with an option hydraulic central unit.



Unroller with retractable teeth

Attached to the turbine, it brings the material with regularity for a homogeneous work without jamming. The retractable teeth pull the long strands compacted by the press and give them back volume during projection for efficient straw blowing of the building.



Retractable tooth

Patented tine system: ensures efficient unrolling that prevents product from falling back under the machine. It ensures even and homogeneous distribution along the feed alley. A version for telehandler exists but must be studied by our design office.

OPTIONAL EQUIPMENT



270° chute

Turbine dedicated to the projection of straw thus reducing dust emissions. The 270° chute ensures a straw blowing distance of 15 m on the right side and 13 m on the left side allowing a bedding of a building in a single pass.



Hydraulic body extension

Allows the machine to use square bales. This option increases the versatility of the machine, allowing it to distribute round bales (hay, wrapped) and square bales.



Electric control

Allows the control of all the functions of the machine from the tractor cab for a comfortable use. This control allows simultaneous use of the machine's functions and has a display screen with storage of 3 conveyor speeds depending on the type of bales and applications.

COMPATIBILITY



CONTROL



*A version for telehandler exists but must be studied by our design office.

Specs	UBI FLOW MOUNTED	UBI FLOW TRAILED
Max bale diameter (cm)	Ø 180	Ø 180
Square Bale (m) - requires Hydraulic body extension	1,20 x 0,90 x 2,50	1,20 x 0,90 x 2,50
Distribution	Right & Left	Right & Left
Straw blowing distance (m)	17	17
Distribution offset from frame center (mm)	1285	1285
Overall height (mm)	2870	2870
Overall length (mm) Turbine front / rear	3450	3900 / 4600
Overall width (mm)	2000	2000
Hydraulic function	1 SE	1 SE
Tractor power (HP)	100	40
Unladen weight (Kg)	1150	1200

UBI SWITCH

REMOTE CONTROLLED TOOL CARRIER BALE UNROLLER



The UBI Switch radio-controlled tool-carrier unroller is capable of performing all tasks related to feeding, straw spreading and animal welfare. When not equipped with accessories, this machine ensures the distribution of round bales efficiently thanks to its tilting body, its retractable tines and its 180° rotation. Equipped with a hydrostatic transmission for a flexible piloting and an extreme precision in the execution of the various works, its small overall width of 1,60 m and its rear driving and guiding wheel allow it to circulate and to use the accessories in the smallest corners of the farm. It has a parallelogram accessory change system, which secures the accessory by a mechanical stop. The change of attachment is made without any tools in a record time 2 minutes.



Unroller with retractable teeth

The unroller is attached to the swivelling body. Its fingers are retractable and their function is to pull the long strands compacted by the press and to give them back their volume before putting them in the accessory. Manually adjustable in height, it brings with regularity the material to make an even strawbedding or a regular distribution.



Radio control

Remote controlled via a radio command that controls all the movements of the machine: start, stop, action of the unroller and attachments. It allows you to be as close as possible to the animals during straw spreading applications, and to be able to open and close the gates while handling the machine.

ATTACHMENTS



Distribution auger

Allows the feeding of mechanized conveyor on the right or on the left. It can also be used to distribute along the feed fence in narrow aisles (2.40 m). The accessory is equipped with a force control that avoids jamming problems. Distribution height: 55 cm.



Double straw spreading disc

Spreading Perfect for indoor straw bedding and litter bleaching. This attachment is suitable for use in round bales or square bales. The speed of rotation of the discs is manually adjustable.



Stall sweeper

Brush Ø 1 m carterized with rotation in both directions for a left or right sweeping. The brush can be moved manually. It is also possible to attach this brush to the back of the machine to allow the stalls to be straw bedded and cleaned in a single pass.



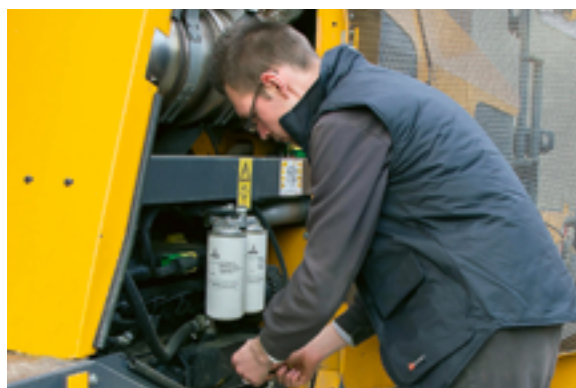
Distribution conveyor and straw spreader

Distribution on the right or left offset by 36 cm. This conveyor allows to distribute in a homogeneous way while keeping a compact size of 210 cm. The straw spreader can be folded down hydraulically and allows straw to be spread at a distance of 3 m from the nose of the cubicles from the circulation corridor.

Specs	UBI SWITCH
Max bale diameter (cm)	Ø 180
Square bale (m)	1,20 x 0,90 x 2,50
Engine / Tank (L) 4 Cylinders	4 Cylinders 25 HP / 50
Overall height (mm)	2400
Overall length (mm) Turbine front / rear	4000
Overall width (mm)	1600
Rear	Wheel drive and steering / 2 wheel drive
180° rotation / Tilting body	Yes / Yes
Unladen weight (Kg)	1900

R&D DEPARTMENT, CUSTOMER SERVICE, SPARE PARTS: THE SPIRIT OF SERVICE EVERY DAY

ASK YOUR LUCAS G DEALER FOR ADVICE ON THE CHOICE OF YOUR OPTIONS...



Your LUCAS G dealer.

LUCAS 
FEEDING SOLUTIONS

Siège Social
22, Rue du Stade, 85130 Chanverrie
T : +33 (0)2 51 65 41 36 // F : +33 (0)2 51 65 41 51
lucasg@lucasg.com

 [lucasg_agri](#)  [Lucas G](#)  [Lucas G France](#)